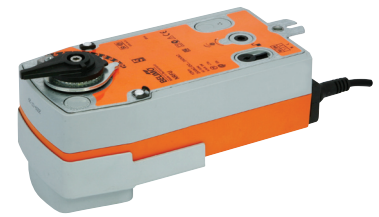


- Mechanical Fail-Safe Rotary Actuators for:
 - 2-way DN25...50 CCV
 - 3-way DN32...50 CCV
- Torque: 10Nm
- Modulating control: NRFU24-SR (AC/DC 24V)
- Open/Close control: NRFU, NRFU-S2 (AC 24...240V) (DC 24...125V)



Technical data

Basic technical data			
Torque	-motor		Min. 10Nm @ nominal voltage
	-spring return		Min. 10Nm
Angle of rotation			90°
Direction of rotation	-motor		Selected by mounting side of L/R
	-spring return		Selected by mounting side of L/R or reversing
Sound power level			Motor: max. 45dB(A), spring return: max. 62dB(A)
Position indicator			Mechanical
Running time	-motor		~150s (NRFU24-SR); ~75s (NRFU-S2, NRFU)
	-spring return		~20s @ -20...+50°C
Ambient temp.			-30...+50°C
Non-operation temp.			-40...+80°C
Humidity			5...95% RH, non-condensing
Degree of protection			IP54
EMC			CE according to 2004/108/EC
Low voltage directive			CE according to 2006/95/EC
Maintenance			Maintenance-free
NRFU24-SR	Nominal voltage range		AC 19.2...28.8V, 50/60Hz / DC 21.6...28.8V
	Power consumption	-running	3.5W @ nominal torque
-holding		2.5W	
For transformer sizing			9VA
Connecting cable			Cable 1m, 4x0.75mm ²
Control signal Y			DC (0)2...10V @ input impedance 100kΩ
Position feedback signal U			DC 2...10V @ max. 0.5mA
Position accuracy			±5%
Protection class			III (Extra-low voltage)
Weight			2.0kg
NRFU	Nominal voltage range		AC 19.2...264V, 50/60Hz / DC 21.6...137.5V
	Power consumption	-running	6W @ nominal torque
-holding		2.5W	
For transformer sizing			9.5VA
Connecting cable			Cable 1m, 2x0.75mm ²
Protection class			III (Extra-low voltage)
Weight			1.7kg
NRFU-S2	Nominal voltage range		AC 19.2...264V, 50/60Hz / DC 21.6...137.5V
	Power consumption	-running	6W @ nominal torque
-holding		2.5W	
For transformer sizing			9.5VA
Auxiliary switch (-S2)			2xSPDT, 1mA...3(0.5)A, AC 250V One fixed at 10%, one adjustable 10%...90%
Connecting cable	-motor		Cable 1m, 2x0.75mm ²
	-S2		Cable 1m, 6x0.75mm ²
Protection class			II (Totally insulated)
Weight			2.2kg

Product features

Simple direct mounting

Simple direct mounting on the Ball Valve using only one screw.

Manual operation

Manual operation is possible with the manual override key.

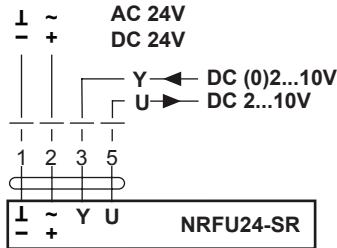
High function reliability

The actuator is overload-proof, needs no limit switches and stops automatically at the end stops.

Wiring diagrams

NRFU24-SR

Modulating control

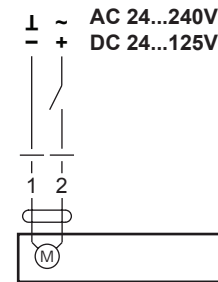


Notes:

- Connection via safety isolating transformer.
 - Other actuators can be connected in parallel.
- Please note the performance data.

NRFU

Open/Close control

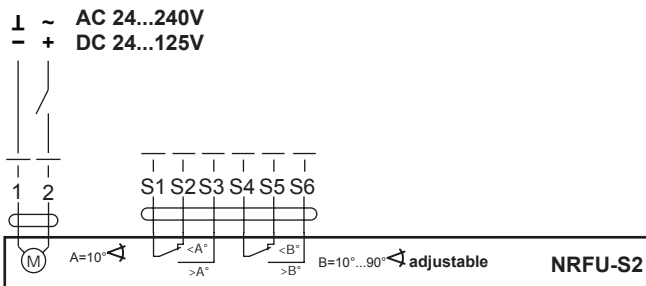


Notes:

- Caution: Power supply voltage!
 - Connection via safety isolating transformer.
 - Other actuators can be connected in parallel.
- Please note the performance data.

NRFU-S2

Open/Close control



Notes:

- Caution: Power supply voltage!
 - Connection via safety isolating transformer.
 - Other actuators can be connected in parallel.
- Please note the performance data.

Dimensions [mm]

NRFU..

